

1 Trombone

# PARTY ROCK ANTHEM

LMFAO  
Arr. G. Giannini

♩=120

2



6

A



10



14

B



18



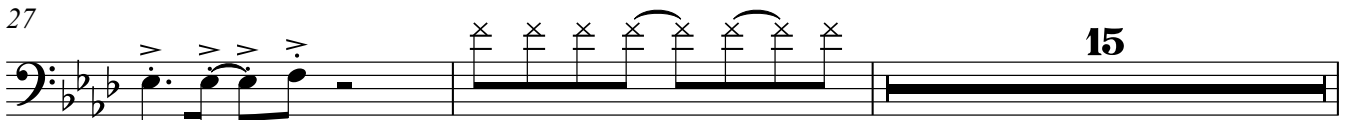
Shake that

23

C



27



15

"led" in our zep\_ p'lin\_ Hey!

44 **D**

Musical staff for measure 44, featuring a bass clef, a key signature of two flats (B-flat and E-flat), and a 4/4 time signature. The staff contains a sequence of eighth notes with stems pointing up, grouped in pairs and separated by eighth rests. The notes are D2, E2, F2, G2, A2, B2, C3, and D3.

48 **E**

Musical staff for measure 48, featuring a bass clef, a key signature of two flats, and a 4/4 time signature. The staff contains a sequence of eighth notes with stems pointing up, grouped in pairs and separated by eighth rests. The notes are E2, F2, G2, A2, B2, C3, D3, and E3. A repeat sign is present at the beginning of the staff.

52

Musical staff for measure 52, featuring a bass clef, a key signature of two flats, and a 4/4 time signature. The staff contains a sequence of eighth notes with stems pointing up, grouped in pairs and separated by eighth rests. The notes are E2, F2, G2, A2, B2, C3, D3, and E3.

56

Musical staff for measure 56, featuring a bass clef, a key signature of two flats, and a 4/4 time signature. The staff contains a sequence of eighth notes with stems pointing up, grouped in pairs and separated by eighth rests. The notes are E2, F2, G2, A2, B2, C3, D3, and E3.

60

**F**

Musical staff for measure 60, featuring a bass clef, a key signature of two flats, and a 4/4 time signature. The staff contains a sequence of eighth notes with stems pointing up, grouped in pairs and separated by eighth rests. The notes are F2, G2, A2, B2, C3, D3, E3, and F3. A repeat sign is present at the beginning of the staff.

64

Musical staff for measure 64, featuring a bass clef, a key signature of two flats, and a 4/4 time signature. The staff contains a sequence of eighth notes with stems pointing up, grouped in pairs and separated by eighth rests. The notes are F2, G2, A2, B2, C3, D3, E3, and F3.

68

Musical staff for measure 68, featuring a bass clef, a key signature of two flats, and a 4/4 time signature. The staff contains a sequence of eighth notes with stems pointing up, grouped in pairs and separated by eighth rests. The notes are F2, G2, A2, B2, C3, D3, E3, and F3.

72

Musical staff for measure 72, featuring a bass clef, a key signature of two flats, and a 4/4 time signature. The staff contains a sequence of eighth notes with stems pointing up, grouped in pairs and separated by eighth rests. The notes are F2, G2, A2, B2, C3, D3, E3, and F3.

75

Musical staff for measure 75, featuring a bass clef, a key signature of two flats, and a 4/4 time signature. The staff contains a sequence of eighth notes with stems pointing up, grouped in pairs and separated by eighth rests. The notes are F2, G2, A2, B2, C3, D3, E3, and F3. The staff ends with a double bar line.